

PART OF THE SE.1/4, OF SECTION 11, T.5N., R.2W., S.L.B. & M.

426

# AMENDED PLAT OF HILLS OF HOMES

IN ROY CITY

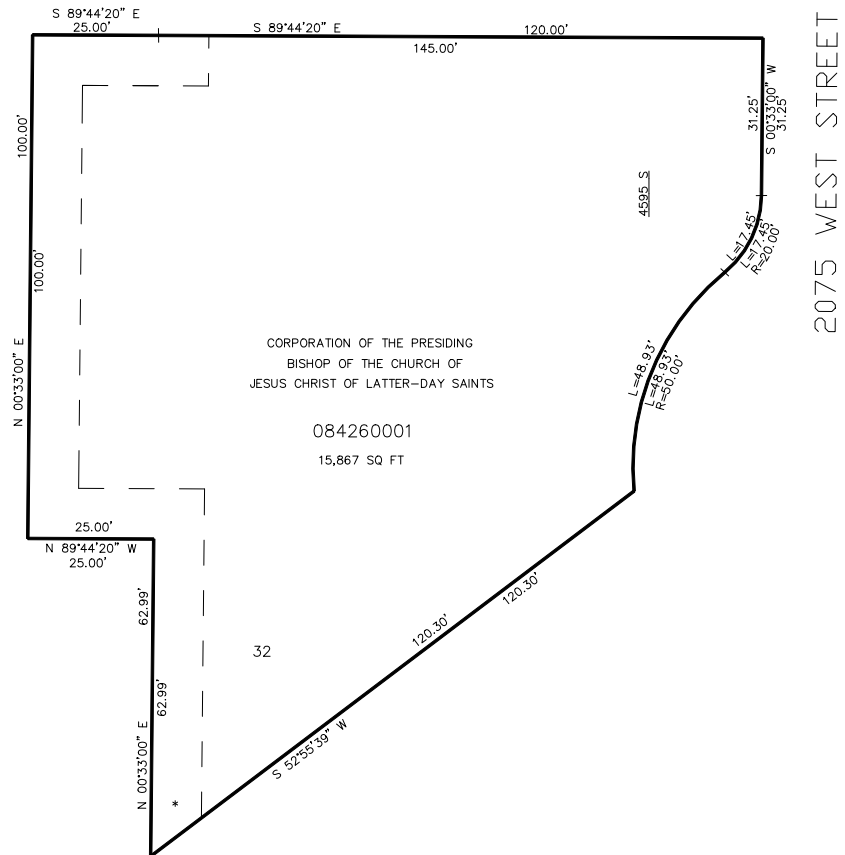
TAXING UNIT: 41

SCALE 1" = 20'

SEE PAGE 78

55 FOOT PRIVATE STREET

SEE PAGE 73



SEE PAGE 78

SEE PAGE 78

\* FOR FENCELINE INFORMATION  
SEE DED PLAT (BK 59 PG 50)

FOR COMPLETE ENG DATA SEE  
ORIGINAL DEDICATION PLAT IN  
BOOK 59, PAGE 50 OF RECORDS.

10' UTILITY & DRAINAGE EASEMENTS EACH  
SIDE OF PROPERTY LINES AS INDICATED  
BY DASHED LINES EXCEPT AS OTHERWISE  
SHOWN.